



**Kalamazoo
Resources Ltd**
ACN: 150 026 850
ASX: KZR

Head Office
Unit 3
328 Reserve Road
Cheltenham 3192
Victoria

Suite 7
8 Clive Street
West Perth 6005
Western Australia

Phone 1300 782 988

Fax +61 8 9481 8488

admin@kzr.com.au

kzr.com.au

ASX Announcement

2nd April 2020

ADVANCED GEOCHEMICAL SOIL SAMPLING PROGRAM TO COMMENCE AT THE SISTERS GOLD PROJECT, WA

Highlights

- Following previous encouraging results Kalamazoo will commence an extensive surface geochemical program at The Sisters Gold Project located on the Wohler Shear, in the Pilbara
- The Wohler Shear is a highly prospective splay from the complex that hosts much of De Grey Mining's (ASX: DEG) Pilbara Gold Project and its recent major gold discovery at Hemi
- The successful Castlemaine Gold Project CSIRO soil research program using cutting edge Ultrafine+™ analysis and interpretation, to be extended to include The Sisters

Kalamazoo Resources Limited (ASX: KZR) ("Kalamazoo" or "the Company") is pleased to advise that it will commence a project wide soil geochemical survey early in the June Quarter at The Sisters Gold Project, located in the Pilbara region of WA. The geochemical survey will be the first systematic gold focussed exploration program undertaken in this area and will target the Wohler Shear Zone over a structural corridor approximately 14km in length.

"We have always considered The Sisters Gold Project to be very prospective both geologically and strategically, and this has been further reinforced by De Grey's recent and nearby spectacular gold discovery at Hemi. With The Sisters Gold Project centrally located and adjacent to projects held by De Grey, Mark Creasy's Coziron Resources and TSX listed Novo Resources Corp, the opportunity to advance our exploration by collaborating again with the CSIRO was compelling," KZR Chairman and CEO Mr Luke Reinehr said today.

The Sisters E47/2983 tenement covers 136km² and is considered prospective for both epigenetic gold mineralisation associated with the Wohler Shear Zone as well as potential mineralised intrusions as newly identified at the Hemi Gold Project (Figure 1), located 50km to the north east. This shear zone is a prospective splay from the Tabba Tabba, Mallina, Withnell and Berghaus Shear Zone complex that hosts much of De Grey's Pilbara gold resource including the Hemi gold deposit. The Sisters Gold Project is underlain by folded and faulted siliciclastics, volcanoclastics and mafic sills of the Mallina Basin which is part of the De Grey Supergroup (3020 to 2930Ma).

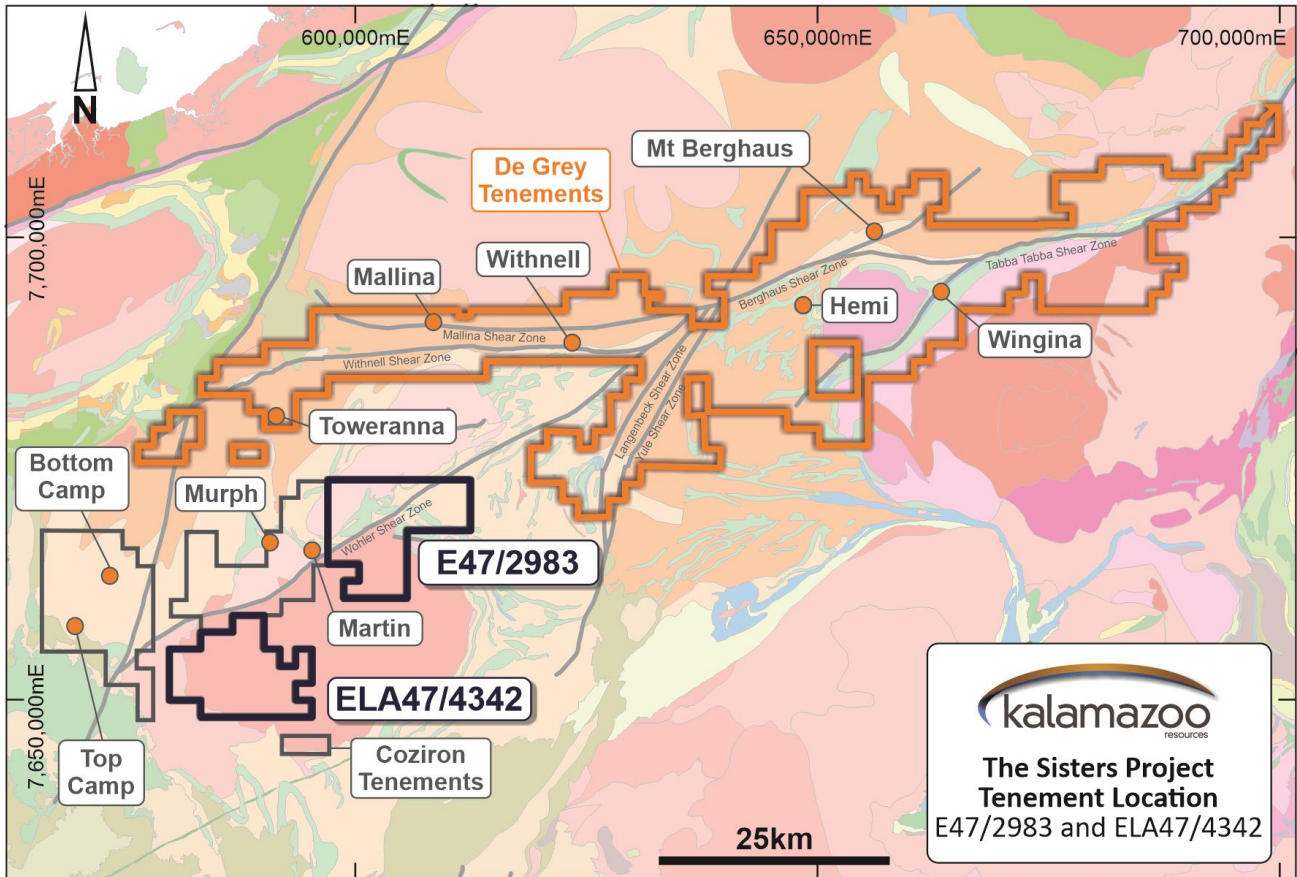


Figure 1: Regional location of The Sisters Gold Projects

On the 29th January 2020 Kalamazoo made application for a further exploration licence (ELA47/4342) covering 117km² increasing its project tenement holding in the region to more than 250km² in this highly prospective area.

Located to the west of The Sisters E47/2983 and ELA47/4342 is Coziron Resources Limited's (ASX: CZR) Croydon Top Camp Gold Project (E47/2150) where gold prospectivity along the Tabba Tabba/Wohler Shear Zone has recently emerged, in addition to De Grey's significant discovery at its Hemi Project located to the north east.

Coziron's maiden drill program recently reported a drill intersection of 8m @ 10.2 g/t Au downhole in hole CRC007, including 1m @ 66.1 g/t Au (ASX: CZR 26 March 2020). Coziron has planned RC drill holes for the coherent gold and pathfinder element anomalies generated by soil sampling programs at the Murph and Martin prospects adjacent to Kalamazoo's E47/2983 tenement.

Previous work by Kalamazoo (ASX: KZR 23 November 2017) at The Sisters Gold Project defined a gold soil anomaly over 3km along the major Wohler Shear Zone corridor that was open to the north east and south west, which also located two gold nuggets south west along strike from the gold soil anomaly. This work utilised soil pulps from a third-party lithium exploration program re-assayed for gold to a 1ppb detection limit. Although the underlying sample fraction was not optimal for the detection of gold, the results were very encouraging with a significant anomaly over a 3km strike length and more than 500m wide with a maximum of 80ppb Au (Figure 2).

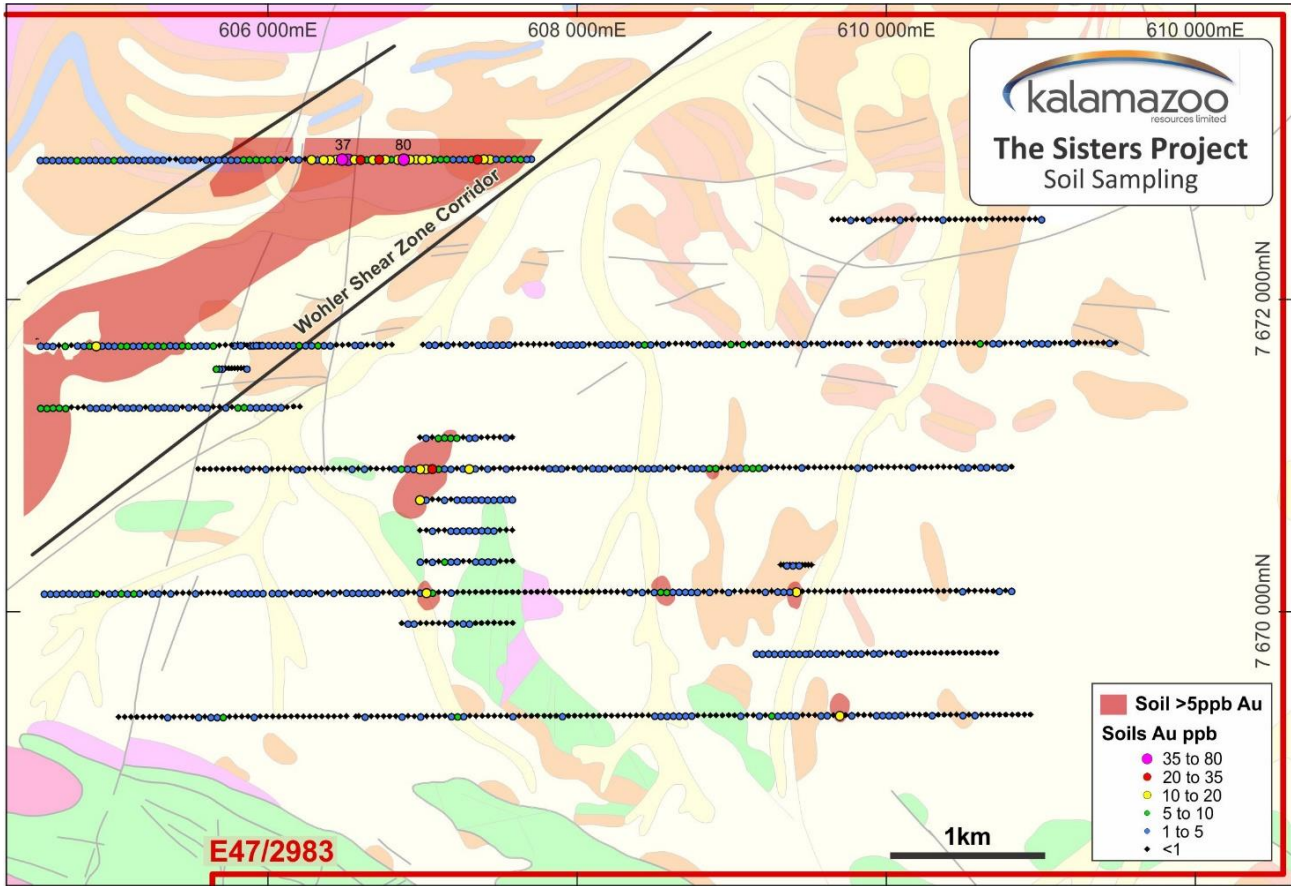


Figure 2: Soil gold geochemistry (-10+2mm fraction) from previous soil sampling program

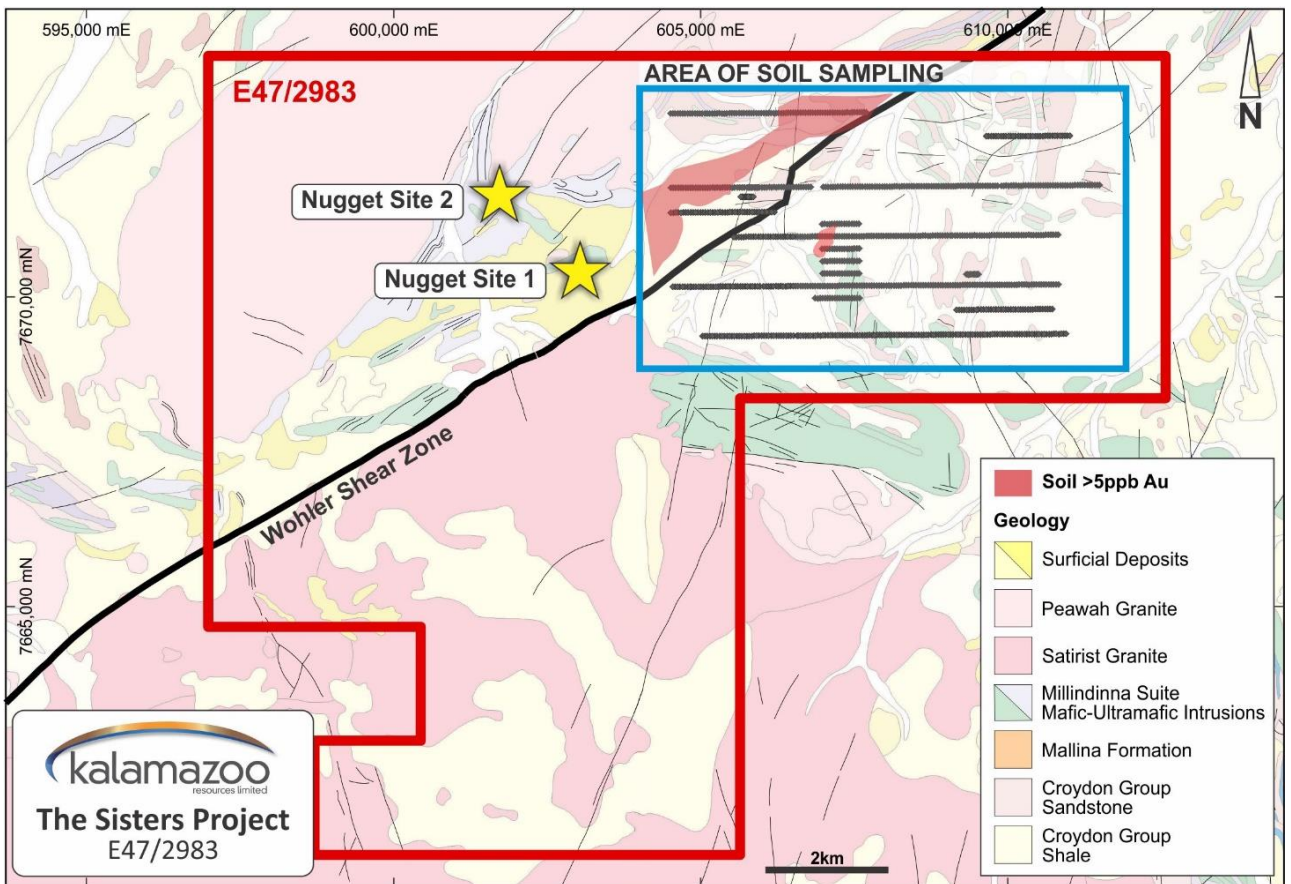


Figure 3: Geology, previous soil coverage, Area of 2017 Soil Sampling and location of nuggets

Kalamazoo is currently conducting collaborative soil geochemical programs with CSIRO at its Castlemaine and South Muckleford Gold Projects in Victoria and is expanding that collaboration to include The Sisters Gold Project in Western Australia.

The soil sampling program at The Sisters will cover an area of approximately 45km² with an estimated 2,800 samples to be collected along the Wohler Shear Zone corridor (Figure 3).

The Sisters Gold Project samples will be sent to Labwest (Perth) for UltraFine+™ analysis of trace elements and a range of other physical characteristics in a CSIRO research project led by Dr Ryan Noble. The UltraFine+™ data will be used to potentially directly detect gold mineralisation as well as any broad alteration halos as a means to focus exploration towards follow up ground geophysical surveys and drill testing. Subject to the results from the soil geochemical program at The Sisters, Kalamazoo will consider utilising sub-audio magnetic surveys (“SAM”) for direct resource targeting purposes.

It is of note that De Grey has also utilised the CSIRO Ultrafine+™ and SAM geophysical surveys at its nearby Pilbara Gold Project to explore through sand cover and to better define controlling gold structures and provide improved targeting for drilling campaigns (ASX: DEG 2 July 2019).

Victorian Gold Project Drilling Update

Stage 1 of Kalamazoo’s maiden diamond drill campaign at the Castlemaine Gold Project was completed on 31 March 2020. Operating in an environment of complying with all State and Federal COVID-19 guidelines and restrictions, Kalamazoo is working towards delivering all assays to the laboratory and then compiling and announcing drill results by the end of April 2020, or shortly after.

For further information, please contact:

Luke Reinehr
Chairman / CEO
luke.reinehr@kzr.com.au

Victoria Humphries
Investor Relations – NWR Communications
victoria@nwrcommunications.com.au

Competent Persons Statement

The information in this release relating to the exploration data for all Western Australian projects is based on information compiled by Mr Lance Govey, a competent person who is a Member of The Australasian Institute of Mining and Metallurgy. Mr Govey is an employee of BinEx Consulting who is engaged as the Exploration Manager WA for the Company. Mr Govey has sufficient experience which is relevant to the style of mineralisation and type of deposit under consideration and to the activity which he is undertaking to qualify as a Competent Person as defined in the 2012 Edition of the ‘Australasian Code for Reporting of Exploration Results, Mineral Resources and Ore Reserves’. Mr Govey consents to the inclusion in this document of the matters based on his information in the form and context in which it appears.

Response to COVID-19

Kalamazoo has been proactively managing the potential impact of COVID-19 and has developed systems and policies to ensure the health and safety of its employees and contractors, and of limiting risk to its operations. These systems and policies have been developed in line with the formal guidance of State and Federal health authorities and with the assistance of its contractors and will be updated should the formal guidance change. Kalamazoo’s first and foremost priority is the health and wellbeing of its employees and contractors.

To ensure the health and wellbeing of its employees and contractors, Kalamazoo has implemented a range of measures to minimise the risk of infection and rate of transmission to COVID-19 whilst continuing to operate. All operations and activities have been minimised only to what is deemed essential. Implemented measures include employees and contractors completing a COVID-19 risk declaration, increased hygiene practices, the banning of non-essential travel for the foreseeable future, establishing strong infection control systems and protocols across the business and facilitating remote working arrangements, where practicable and requested. Kalamazoo will continue to monitor the formal requirements and guidance of State and Federal health authorities and act accordingly.